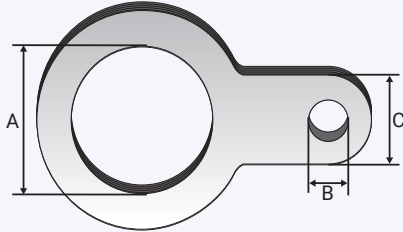


ACCESSORIES

Slip-On Earth Tag

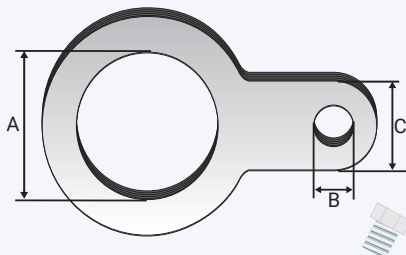
NICKEL PLATED BRASS OR STAINLESS STEEL 316/316L



Product Code	Size Ref.	Dimension 'A'	Dimension 'B'	Dimension 'C'	Square Section	Short Circuit Fault Current Ratings BS6121 Part 5: 1993	
6220-1	0/1	M20	7mm	12mm x 1.5mm	18mm ²	20mm	3.06KA / 1 second
622902	2	M25	7mm	12mm x 1.5mm	18mm ²	25mm	4.00KA / 1 second
622903	3	M32	12mm	22mm x 1.5mm	33mm ²	32mm	5.40KA / 1 second
622904	4	M40	12mm	32mm x 1.5mm	48mm ²	40mm	7.20KA / 1 second
622905	5	M50	12mm	40mm x 1.5mm	60mm ²	50mm	10.40KA / 1 second
622906	6	M63	12mm	40mm x 1.5mm	60mm ²	63mm	10.40KA / 1 second
622907	7	M75	12mm	40mm x 1.5mm	60mm ²	75mm	10.40KA / 1 second
622908	8	M80	12mm	40mm x 1.5mm	60mm ²	-	-
622909	9	M90	12mm	40mm x 1.5mm	60mm ²	-	-

All dimensions are in mm.

Screw-On Earth Tag



Product Code	Size Ref.	Dimension 'A'	Dimension 'B'	Dimension 'C'	Square Section	Short Circuit Fault Current Ratings BS6121 Part 5: 1993	
6030-1	0/1	M20	M6	10mm x 3mm	30mm ²	20mm	26KA / 1 second
603202	2	M25	M6	10mm x 4mm	40mm ²	25mm	26KA / 1 second
603203	3	M32	M6	12mm x 6mm	70mm ²	32mm	26KA / 1 second
603204	4	M40	M8	20mm x 6mm	120mm ²	40mm	26KA / 1 second
603205	5	M50	M10	24mm x 8mm	185mm ²	50mm	43KA / 1 second
603206	6	M63	M12	40mm x 8mm	300mm ²	63mm	43KA / 1 second
603207	7	M75	M12	40mm x 8mm	300mm ²	75mm	43KA / 1 second
603208	8	M80	M12	40mm x 8mm	300mm ²	-	-
603209	9	M90	M12	40mm x 8mm	300mm ²	-	-

All dimensions are in mm.

Sealing Gasket Metric

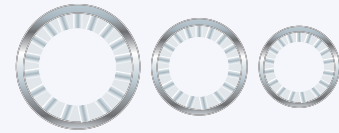


Product Code	Metric Size	Thickness 'A'
805520	M20	2.0
805525	M25	2.0
805532	M32	2.0
805540	M40	2.0
805550	M50	2.0
805563	M63	2.0
805575	M75	2.0
805580	M80	2.0
805590	M90	2.0

All dimensions are in mm.

Serrated Washer

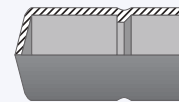
STAINLESS STEEL 316/316L



Product Code	Metric Size
805620	M20
805625	M25
805632	M32
805640	M40
805650	M50
805663	M63
805675	M75
805680	M80
805690	M90

All dimensions are in mm.

Insulation Sleeve



Product Code	Size Reference
550502	2

All dimensions are in mm.

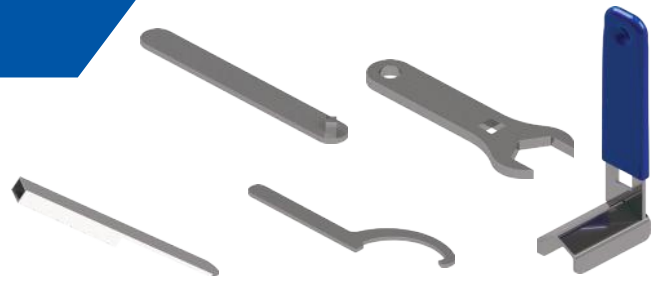
Terminal Connector



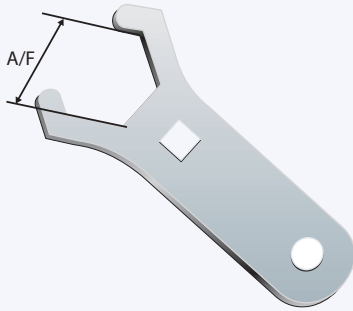
Product Code	Size Ref.	Hole Diameter	Allen Key No.
580302	2	10mm	4mm

All dimensions are in mm.

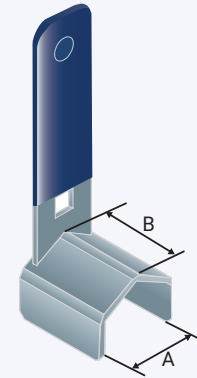
TOOLS



POSI SPANNER



LOCKNUT SPANNER



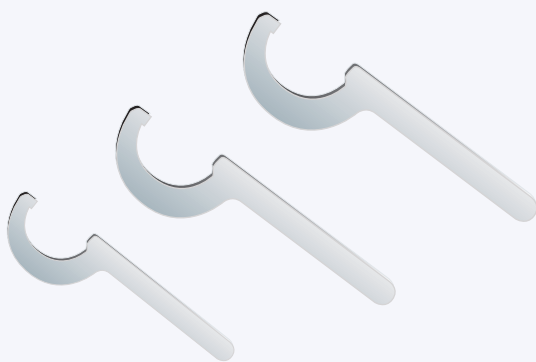
Gland Size	A/F	SPANNER PRODUCT CODE		
		Posi Flex™	Posi Grip™	Posi Braid™
00	28	401205	401205	401205
0	30	401206	401206	401206
1	34	401207	401207	401207
2	42	401208	401208	401208
3	52	401209	401209	401209
4	62	401210	401210	401210
5	74	401211	401211	401211
6	95	401212	401212	401212
7	110	401213	401213	401213
8	118	401214	401214	401214
9	130	401215	401215	401215

A/F dimensions are in mm. Refer to data sheet for installation torque value.

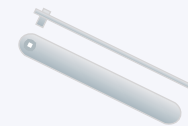
Spanner Product Code	Suit Gland Size	Across Flats 'A'	Depth of Reach 'B'
40162025PA60	0 / 1	25.0	60.0
40162032PA60	2	32.0	60.0
40162040PA60	3	40.0	60.0
40162052PA60	4	52.0	60.0
40162065PA65	5	65.0	65.0
40162080PA70	6	80.0	70.0
40162096PA75	7 / 8	96.0	75.0
40162111PA80	9	111.0	80.0
40162125PA85	10	125.0	85.0
40162135PA85	11	135.0	85.0

Dimensions are in mm.

C SPANNER



SQUARE POWER BAR

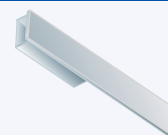


Product Code

401600-000

WIRE BENDING TOOL

FOR STEEL WIRE ARMOUR CABLE



Product Code

401701

Gland Size	A2	BW	CW	D1W	E1W
10	401610	401610	401610	401610	401610
11	401611	401611	401611	401611	401611
12	401612	401612	401612	401612	401612
13	401613	401613	401613	401613	401613

Refer to data sheet for installation torque value.

SELECTION CHART HEX SPANNER



CCG HEX SPANNER SELECTION CHART

Gland Size	Hex	A2	BW	CW	D1W	E1W	IPLUS	E1EX	E1EX-U	EX-CGUARD	A2F	A2EX	ARMORTEX	FLP/FLPTR	REDUCER	ADAPTOR
00/0	24	4016-0	4016-0	4016-0	4016-0	4016-0	4016-0	4016-0	4016-0	4016-0	4016-0	4016-0	4016-0	4016-0	4016-0	4016-0
00	25	-	401600-025	401600-025	401600-025	401600-025	401600-025	401600-025	401600-025	401600-025	401600-025	401600-025	401600-025	401600-025	-	-
1	27	401601-027	401601-027	401601-027	401601-027	401601-027	401601-027	401601-027	-	401601-027	401601-027	401601-027	-	-	-	-
2	30	-	-	-	-	-	-	-	401601-030	-	-	-	401601-030	401601-030	-	-
2	32	401602-032	401602-032	401602-032	401602-032	401602-032	401602-032	-	-	-	-	-	-	-	401602-032	401602-032
2	35	401602-035	401602-035	401602-035	401602-035	401602-035	401602-035	401602-035	-	401602-035	401602-035	401602-035	-	-	-	-
2	38	-	401602-038	-	-	-	-	-	401602-038	-	-	-	-	-	401602-038	401602-038
3	40	401603-040	401603-040	401603-040	401603-040	401603-040	401603-040	-	-	-	-	-	401603-040	-	-	-
3	42	401603-042	401603-042	401603-042	401603-042	401603-042	401603-042	401603-042	-	401603-042	401603-042	401603-042	-	401603-042	-	-
3	45	-	-	-	-	-	-	-	401603-045	-	-	-	-	-	-	-
3	47	-	-	-	-	-	-	-	-	-	-	-	401603-047	-	-	-
4	52	401604-052	401604-052	401604-052	401604-052	401604-052	401604-052	401604-052	-	401604-052	401604-052	401604-052	-	-	-	-
4	55	-	-	-	-	-	-	-	401604-055	-	-	-	401604-055	401604-055	-	-
4	60	-	-	-	-	-	-	-	-	-	-	-	401604-060	401604-060	-	-
5	65	401605-065	401605-065	401605-065	401605-065	401605-065	401605-065	401605-065	401605-065	401605-065	401605-065	401605-065	-	-	-	-
5	75	-	-	-	-	-	-	-	-	-	-	-	401605-075	401605-075	-	-
6	80	401606-080	401606-080	401606-080	401606-080	401606-080	401606-080	401606-080	-	401606-080	401606-080	401606-080	-	-	-	-
6	85	-	-	-	-	-	-	-	401606-082	-	-	-	401606-082	401606-082	-	-
6	96	401606-085	401606-085	401606-085	401606-085	401606-085	401606-085	401606-085	-	401606-085	401606-085	401606-085	-	401606-085	-	-
7/8	112	401607-096	401607-096	-	401607-096	-	-	401607-096	401607-096	401607-096	401607-096	401607-096	-	-	-	-
9	126	-	-	-	-	-	-	401609-112	401609-112	401609-112	401609-112	401609-112	-	-	-	-
10	136	-	-	-	-	-	-	401610-126	401610-126	-	401610-126	401610-126	-	-	-	-
11	-	401611-136	401611-136	401611-136	-	-	-	-	-	-	-	-	-	-	-	-
12	-	401612-137	401612-137	401612-137	-	-	-	-	-	-	-	-	-	-	-	-
13	-	401613-148	401613-148	401613-148	-	-	-	-	-	-	-	-	-	-	-	-